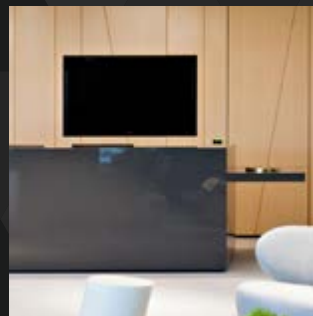
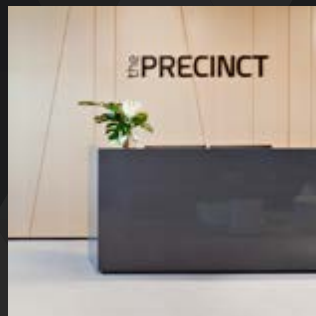


# the PRECINCT



SYDNEY

# THE PRECINCT

Purpose built in 2017, The Precinct offers next generation facilities to its members.

## CO-WORKING

A dedicated co-working area offers a range of spaces to suit various activities and the opportunity to work alongside like-minded professionals. An adjacent lounge offers a more informal environment with comfortable meeting booths, all day refreshments and an outdoor terrace with superb views across Sydney Olympic Park.

## MEETING ROOMS

With a range of room sizes and configurations to suit all needs, there's the perfect space for any requirement. From a board meeting to a new product presentation, a training session to a strategy workshop. All rooms are equipped with the latest technology.

## CONCIERGE AND BUSINESS SERVICES

Your Sydney business address awaits with call answering and a concierge service including, mail forwarding, bag storage, ticket printing, transport booking and guest greeting.



Lounge



Co-Working Space



Kitchenette



Boardroom 402

## MEETING ROOMS

Room Name	Size (m <sup>2</sup> )	Seats	U Shape	Classroom	Cabaret	Theatre	Function	Per Hour	Per Day
MR 403, 404, 407, 409, 411	24	8						\$100	\$500
MR 405, 406, 408, 410	24	10						\$100	\$500
BR 412	30	10						\$130	\$650
BR 413	40	14						\$160	\$800
BR 401	40	16						\$160	\$800
BR 402*	50	22						\$220	\$1,100
Forum 1	65	24	20	32	36	50		\$260	\$1,300
Forum 2	65	24	25	32	36	60		\$260	\$1,300
Forum 1 & 2	130	42	36	60	60	120	80	\$520	\$2,600
The Lab	70	20	25	30	18	40		\$260	\$1,300
The Showroom	80						80	\$260	\$1,300
Package available for City Wing: Forum 1, Forum 2, The Lab, The Showroom, BR 412, BR 413, MR 414								\$1,200	\$6,000
<b>LEVEL 6 CO-WORKING AREA - Members only</b>									
MR 604	8	4						\$35	n/a
MR 605	16	6						\$45	n/a

\*Boardroom 402 includes Dual Screens and HD Cisco Video conference equipment

## CATERING

Service	Price	Unit	Description
Light Breakfast *	\$9	Per person	3 items
Café Cooked Breakfast *	\$15	Per person	Full cooked breakfast with Juice
Tea Break	\$8.50	Per person	3 items
Café Buffet Pass (12.30pm to 1.30pm)	\$24	Per person	Selection of hot and cold buffet items served in café
Sandwich Lunch *	\$12	Per person	Sandwich and wrap selection
Cheese Platter	\$30	Per platter	Cheese and fruit platter for 6
Soft drink selection	\$30	Per bowl	12 drinks mix of juice, energy and soft drinks
Cookie Jar	\$30	Per jar	12 Gourmet Cookies
Fruit Basket	\$18	Per basket	A selection of fruit

\* minimum order 6

## MEETING ROOM SERVICES

Flip Chart Pad	\$40
Laptop Hire (per day)	\$75
USB Drive 8GB	\$10

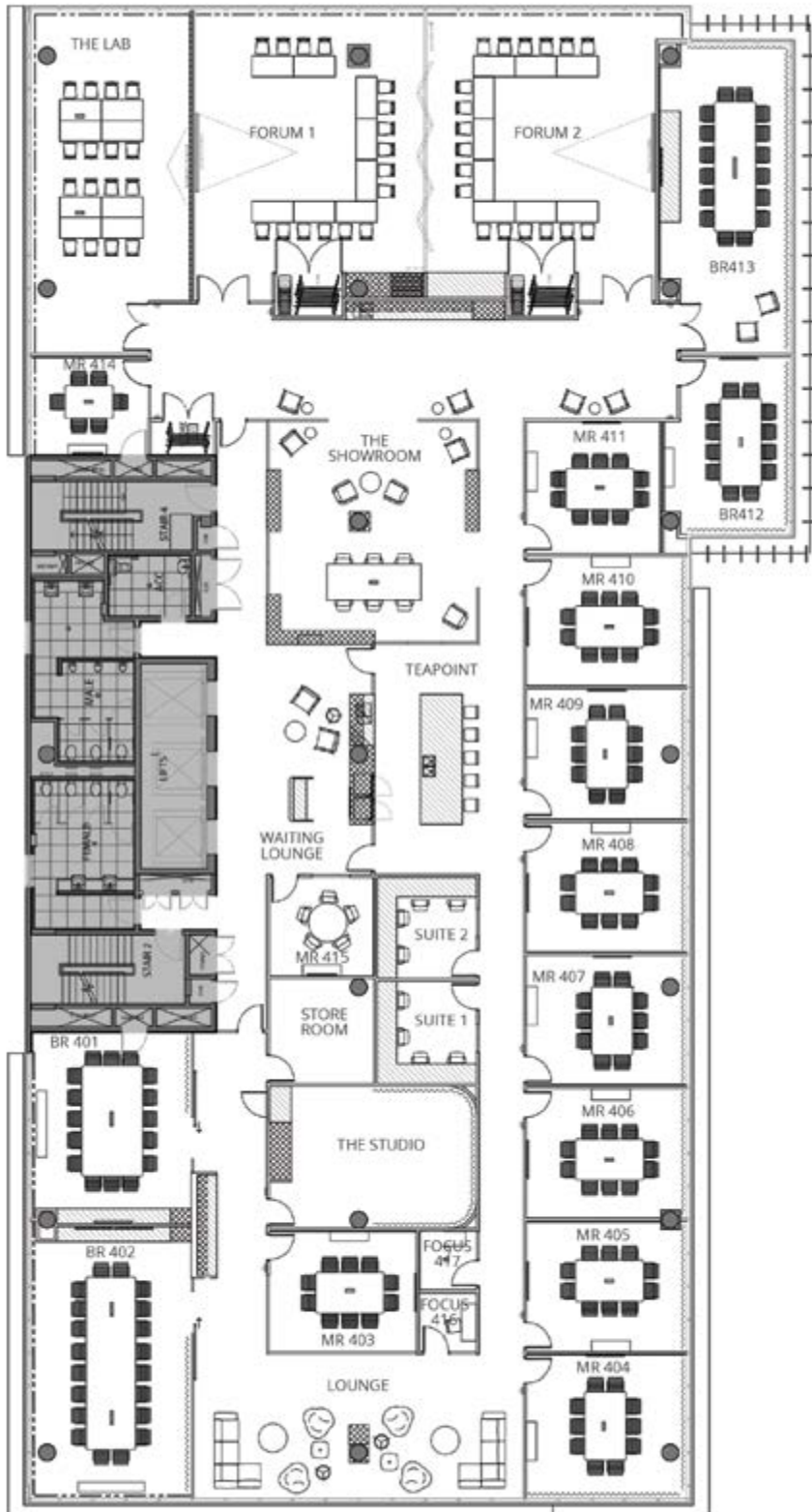
- All rooms include presentation screens and HD cameras for Video meetings
- All rates include Wifi, phone calls and complimentary tea, coffee and still and sparkling water
- All prices exclude GST

## OFFICE SUPPORT SERVICES

Print or Copy (one side)	A4 B/W	\$0.08
	A3 B/W	\$0.16
	A4 Colour	\$0.50
	A3 Colour	\$1
Mail Forwarding cost	Cost +15%	
Courier	Cost +15%	
Archive box storage in basement facility (per month)	\$15	

# MEETING ROOMS

Match the perfect room, technology and catering for your event, and with our client services team on call to look after your guests, you can be assured of a first-class experience from start to finish.



## MEETING AND BOARD ROOMS

All rooms offer a contemporary fit out and seamless technology, including HD conference cameras and 60" screens with wireless or HDMI connections.

## FORUM 1 AND 2

Ideal for larger presentations and training, these rooms accommodate up to 120. Flexible furniture offers a range of seating styles to suit your needs.

## THE LAB

A fully customisable space for workshops, planning sessions or projects. An interactive whiteboard to get ideas mapped out and table tennis and darts to relax and re-energise between sessions.

## THE SHOWROOM

An ideal space to network or to showcase your company. Canapes or breakfast can be served whilst your customers mingle with your staff or partners.

A range of catering is available in the breakout areas, in-room or enjoy a break with a buffet lunch in The Precinct Café.

# CO-WORKING

Book our co-working space by the day for \$99 including fast internet, buffet lunch and all day refreshments. Or get added value from our monthly subscriptions.

Co-Working Subscriptions	Address Plus	Bronze	Silver	Gold	Team
Access Days (weekdays) per month	1 Day	4 Days	8 Days	22 Days	Unlimited for 4 people
Price per month	\$99	\$299	\$399	\$999	\$2999
Lounge and Co-working access	✓	✓	✓	✓	✓
Fast & Free Wifi	✓	✓	✓	✓	✓
Refreshments & Lunch	✓	✓	✓	✓	✓
Printer Access	✓	✓	✓	✓	✓
Shower Facilities	✓	✓	✓	✓	✓
Concierge Services	✓	✓	✓	✓	✓
Postal Address & Mail Handling	✓	✓	✓	✓	✓
Receptionist Answered Local Number	+\$50pm	+\$50pm	✓	✓	✓
Locker			✓	✓	✓
Complimentary Parking Space				✓	✓
Private Office Option					✓
Complimentary Meeting Room Use				8 hrs / month	16 hrs / month

All subscriptions include one access card which can be shared between staff to utilise days. Additional access cards available at \$50 per month.

Team subscription includes 4 access cards and the option of a private office (subject to availability).

Address Plus subscription allows unused days from any month to roll over to following months, to a maximum of 4 days.

Any additional days used charged at \$99.

# CONTACT US

For Subscription or Booking Enquiries visit  
[www.theprecinctglobal.com](http://www.theprecinctglobal.com)

## **The Precinct**

Level 6

10 Herb Elliott Avenue

Sydney Olympic Park

NSW 2127

1300 01 01 06

[reception.syd@theprecinctglobal.com](mailto:reception.syd@theprecinctglobal.com)

Opening Hours 7.30 to 5.30 Monday to Friday